



**MILLSFEED**  
HIGH FEED MILL

## Estensione gamma frese MILL-SFEED

TaeguTec ha aggiunto nuove frese alla linea MILL-SFEED .

Sono state aggiunte nuove frese a candela per diversificare la gamma della linea MILL-SFEED adatte alla fresatura di spallamenti nell'industria della minuteria.

Per ulteriori informazioni, contattare il responsabile del prodotto.



0731 879461 - 870551  
[info@mprutensili.it](mailto:info@mprutensili.it)

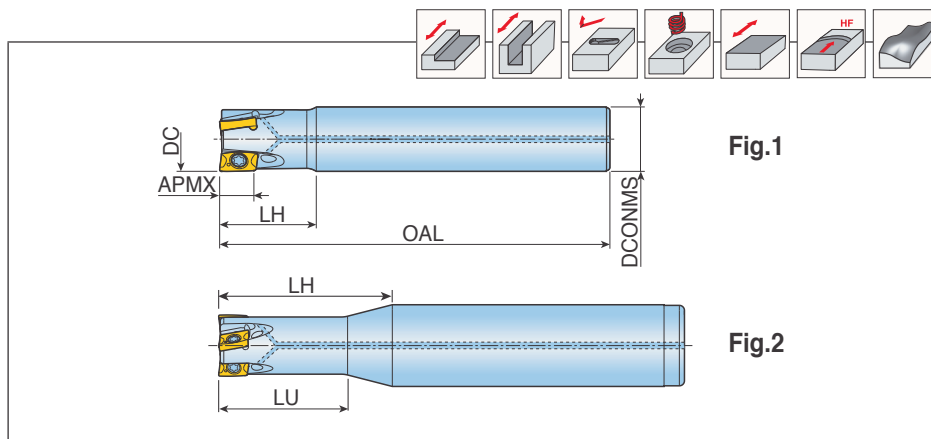
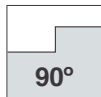


**TaeguTec**  
Member IMC Group

# 2S-TE90CV-05

**MILLSPEED**  
HIGH FEED MILL

Frese cilindriche



Descrizione		Dimension (mm)						Coolant hole	Fig.	Insert
		DC	DCONMS	OAL	LH	LU	APMX			
<b>2S-TE90CV- 106-06-05</b>	1	6	6	60	12	-	5.0	●	1	CVK(H)T 0502...
<b>106-06-05-L50</b>	1	6	6	50	10	-	5.0	●	1	
<b>208-07-05</b> <span style="color:red">new</span>	2	8	7	80	12	-	5.0	●	1	
<b>208-08-05</b>	2	8	8	80	12	-	5.0	●	1	
<b>208-08-05-L50</b>	2	8	8	50	10	-	5.0	●	1	
<b>208-12-05</b>	2	8	12	80	25	18	5.0	●	2	
<b>209-08-05</b>	2	9	8	80	12	-	5.0	●	1	
<b>210-10-05</b> <span style="color:red">new</span>	2	10	10	80	15	-	5.0	●	1	
<b>212-12-05</b> <span style="color:red">new</span>	2	12	12	80	15	-	5.0	●	1	
<b>310-09-05</b> <span style="color:red">new</span>	3	10	9	80	12	-	5.0	●	1	
<b>310-10-05</b>	3	10	10	80	15	-	5.0	●	1	
<b>310-10-05-L55</b>	3	10	10	55	12	-	5.0	●	1	
<b>310-16-05-L90</b>	3	10	16	90	34	22	5.0	●	2	
<b>311-10-05</b>	3	11	10	80	12	-	5.0	●	1	
<b>312-12-05</b> <span style="color:red">new</span>	3	12	12	80	15	-	5.0	●	1	
<b>412-11-05</b> <span style="color:red">new</span>	4	12	11	80	12	-	5.0	●	1	
<b>412-12-05</b>	4	12	12	80	15	-	5.0	●	1	
<b>412-12-05-L60</b>	4	12	12	60	14	-	5.0	●	1	
<b>412-16-05-L100</b>	4	12	16	100	34	26	5.0	●	2	
<b>413-12-05</b>	4	13	12	80	12	-	5.0	●	1	
<b>414-12-05</b> <span style="color:red">new</span>	4	14	12	80	10	-	5.0	●	1	
<b>514-14-05-L90</b>	5	14	14	90	15	-	5.0	●	1	

• La fresa per l'inserto '-HF' deve essere usata modificando il raggio della sede a 1.8 mm

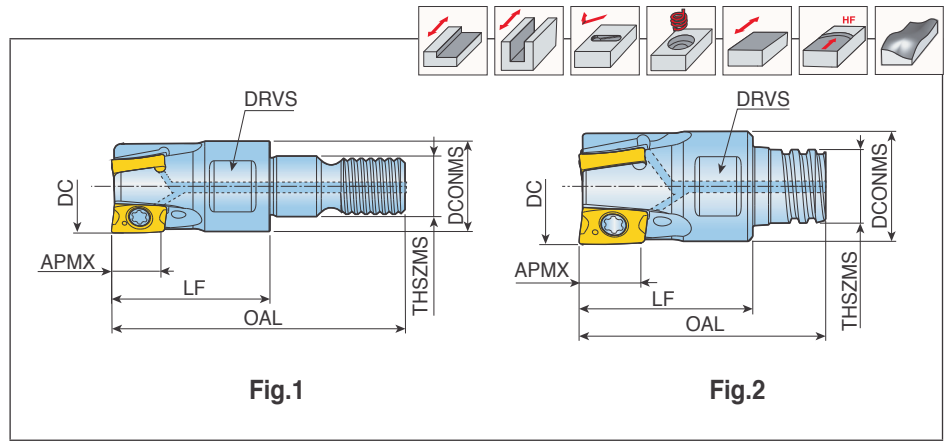
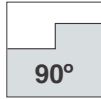
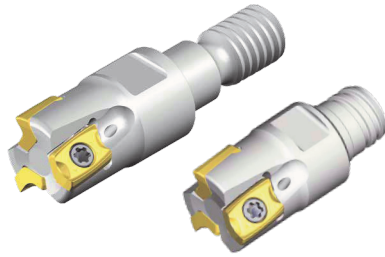


0731 879461 - 870551

[info@mprutensili.it](mailto:info@mprutensili.it)

# 2S-TE90CV-M(S)-05

## Testine modulari



Designation	Z	Dimension (mm)								Coolant hole	Fig.	Insert
		DC	DCONMS	LF	OAL	THSZMS	APMX	DRVS				
<b>2S-TE90CV- 208-M04-05</b> <span style="color:red">new</span>	2	8	7.8	10	21.5	M04	5.0	6	●	1	CVK(H)T 0502...	
<b>310-M06-05</b>	3	10	9.7	17	31.5	M06	5.0	8	●	1		
<b>412-M06-05</b>	4	12	11	17	31.5	M06	5.0	8	●	1		
<b>516-M08-05</b> <span style="color:red">new</span>	5	16	13	23	40.5	M08	5.0	10	●	1		
<b>620-M10-05</b> <span style="color:red">new</span>	6	20	18	23	43.0	M10	5.0	15	●	1		
<b>720-M10-05</b> <span style="color:red">new</span>	7	20	18	23	43.0	M10	5.0	15	●	1		
<b>2S-TE90CV- 208-S05-05</b> <span style="color:red">new</span>	2	8	7.6	10	16.7	S05	5.0	5.5	●	2		
<b>310-S06-05</b>	3	10	9.6	15	21.3	S06	5.0	8	●	2		
<b>412-S08-05</b>	4	12	11.5	16	23.5	S08	5.0	10	●	2		

- La fresa per l'inserto 'HF' deve essere usata modificando il raggio della sede a 1.8 mm
- Monta su steli T-FLEXTEC e MAXI-RUSH

## Ricambi

Descrizione	Vite	Chiave			
<b>2S-TE90CV-05</b>	TS 18033/HG-P	TD 6P			



Contatti  
0731 879461 - 870551  
Email  
[info@mprutensili.it](mailto:info@mprutensili.it)

Trovi tutti i riferimenti commerciali su [www.mprutensili.it](http://www.mprutensili.it) nella sezione Home Page>La Squadra o nella sezione Cosa offriamo>Vendita

