



K-TEC®

KSRS / KSR

**Mandrino a calettamento
a caldo slim**



**Perfetta stabilità
ed elevata precisione**



0731 879461 - 870551
info@mprutensili.it

Informazioni Tecniche

Bilanciatura

Tutti i mandrini sono finemente bilanciati G2,5 a 25.000 g/min. Questo consente la riduzione delle vibrazioni nelle lavorazioni in HSC e la preservazione linea mandrino della macchina utensile.

Elevata Bilanciatura

G2.5
20.000 g/min

Precisione

Con sporgenza 4xD

Concentricità
≤ 0.003 mm



L'accuratezza del serraggio consente una precisione della concentricità dell'utensile entro i 3 µm. Questo permette di minimizzare le usure utensile e quindi di massimizzarne le durate, e di ottenere i migliori risultati nelle operazioni di finitura.

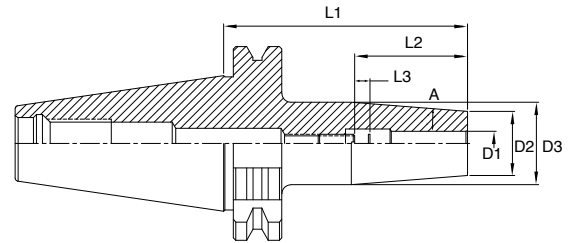
Velocità

Lo speciale acciaio utilizzato per la costruzione dei mandrini, consente tempi di calettamento rapidissimi, tra i 4 e 7 secondi con utensili standard, garantendo un'elevatissima durata oltre i 2000 calettaggi.



SK-KSRS

Mandrini a calettamento a caldo slim 3°
Cono DIN 69871-A

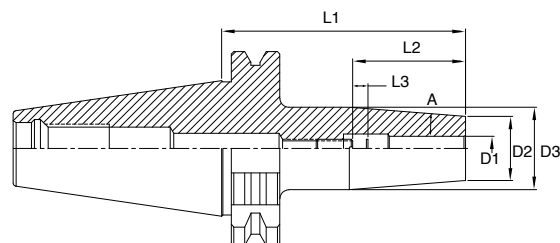


DIN 69871	TIPO A	$\nabla = 0,003$	G2.5 20.000 min ⁻¹
-----------	--------	------------------	-------------------------------------

Codice	SK	D1	L1	D2	D3	L2	L3	A
SK40-KSRS04-80	40	4	80	10	16	-	-	3°
SK40-KSRS06-80	40	6	80	12	18	-	-	3°
SK40-KSRS06-120	40	6	120	12	22	-	-	3°
SK40-KSRS06-160	40	6	160	12	26	-	-	3°
SK40-KSRS08-80	40	8	80	14	20	40	10	3°
SK40-KSRS08-120	40	8	120	14	24	40	10	3°
SK40-KSRS08-160	40	8	160	14	28	40	10	3°
SK40-KSRS10-80	40	10	80	16	22	46	10	3°
SK40-KSRS10-120	40	10	120	16	26	46	10	3°
SK40-KSRS10-160	40	10	160	16	30	46	10	3°
SK40-KSRS12-90	40	12	90	18	25	50	10	3°
SK40-KSRS12-120	40	12	120	18	28	50	10	3°
SK40-KSRS12-160	40	12	160	18	32	50	10	3°

SK-KSR

Mandrini a calettamento a caldo slim 4,5°
Cono DIN 69871-A



DIN
69871

TIPO
A

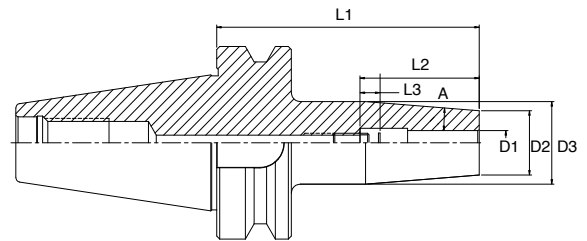
↗ = 0,003

G2.5
20.000
min⁻¹

Codice	SK	D1	L1	D2	D3	L2	L3	A
SK40-KSR04-80	40	4	80	15	20	-	-	4,5°
SK40-KSR06-80	40	6	80	21	27	-	-	4,5°
SK40-KSR06-120	40	6	120	21	27	-	-	4,5°
SK40-KSR06-160	40	6	160	21	32	-	-	4,5°
SK40-KSR08-80	40	8	80	21	27	40	10	4,5°
SK40-KSR08-120	40	8	120	21	27	40	10	4,5°
SK40-KSR08-160	40	8	160	21	32	40	10	4,5°
SK40-KSR10-80	40	10	80	24	32	46	10	4,5°
SK40-KSR10-120	40	10	120	24	32	46	10	4,5°
SK40-KSR10-160	40	10	160	24	34	46	10	4,5°
SK40-KSR12-80	40	12	80	24	32	50	10	4,5°
SK40-KSR12-120	40	12	120	24	32	50	10	4,5°
SK40-KSR12-160	40	12	160	24	34	50	10	4,5°
SK40-KSR16-80	40	16	80	27	34	52	10	4,5°
SK40-KSR16-120	40	16	120	27	34	52	10	4,5°
SK40-KSR16-160	40	16	160	27	34	52	10	4,5°
SK40-KSR20-80	40	20	80	33	42	54	10	4,5°
SK40-KSR20-120	40	20	120	33	42	54	10	4,5°
SK40-KSR20-160	40	20	160	33	42	54	10	4,5°
SK40-KSR25-100	40	25	100	44	52,5	62	10	4,5°
SK40-KSR25-160	40	25	160	44	52,5	62	10	4,5°
SK40-KSR32-100	40	32	100	44	52,5	67	10	4,5°
SK40-KSR32-160	40	32	160	44	52,5	67	10	4,5°
SK50-KSR06-80	50	6	80	21	27	-	-	4,5°
SK50-KSR06-120	50	6	120	21	27	-	-	4,5°
SK50-KSR06-160	50	6	160	21	32	-	-	4,5°
SK50-KSR08-80	50	8	80	21	27	40	10	4,5°
SK50-KSR08-120	50	8	120	21	27	40	10	4,5°
SK50-KSR08-160	50	8	160	21	32	40	10	4,5°
SK50-KSR10-80	50	10	80	24	32	46	10	4,5°
SK50-KSR10-120	50	10	120	24	32	46	10	4,5°
SK50-KSR10-160	50	10	160	24	34	46	10	4,5°
SK50-KSR12-80	50	12	80	24	32	50	10	4,5°
SK50-KSR12-120	50	12	120	24	32	50	10	4,5°
SK50-KSR12-160	50	12	160	24	34	50	10	4,5°
SK50-KSR16-80	50	16	80	27	34	52	10	4,5°
SK50-KSR16-120	50	16	120	27	34	52	10	4,5°
SK50-KSR16-160	50	16	160	27	34	52	10	4,5°
SK50-KSR20-80	50	20	80	33	42	54	10	4,5°
SK50-KSR20-120	50	20	120	33	42	54	10	4,5°
SK50-KSR20-160	50	20	160	33	42	54	10	4,5°
SK50-KSR25-100	50	25	100	44	52,5	62	10	4,5°
SK50-KSR25-160	50	25	160	44	52,5	62	10	4,5°
SK50-KSR32-100	50	32	100	44	52,5	67	10	4,5°
SK50-KSR32-160	50	32	160	44	52,5	67	10	4,5°

BT-KSRS

Mandrini a calettamento a caldo slim 3°
Cono MAS-BT40

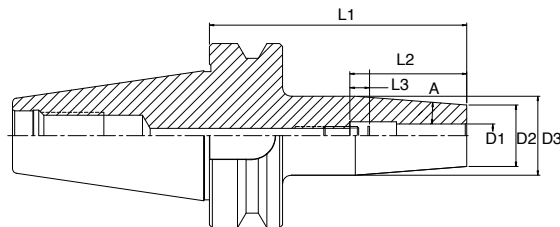


JIS B6339 MAS 403 BT	TIPO A	↗ = 0,003 ↓ ↓	G2.5 20.000 min ⁻¹
----------------------------	-----------	------------------	-------------------------------------

Codice	BT	D1	L1	D2	D3	L2	L3	A
BT30-KSRS03-60	30	3	60	8	11	-	-	3°
BT30-KSRS04-60	30	4	60	10	13	-	-	3°
BT30-KSRS06-80	30	6	80	12	17	-	-	3°
BT30-KSRS08-80	30	8	80	14	19	40	10	3°
BT30-KSRS10-80	30	10	80	16	21	46	10	3°
BT30-KSRS12-80	30	12	80	18	23	50	10	3°
BT40-KSRS04-90	40	4	90	10	16	-	-	3°
BT40-KSRS04-120	40	4	120	10	19	-	-	3°
BT40-KSRS04-160	40	4	160	10	23	-	-	3°
BT40-KSRS06-90	40	6	90	12	18	-	-	3°
BT40-KSRS06-120	40	6	120	12	21	-	-	3°
BT40-KSRS06-160	40	6	160	12	25	-	-	3°
BT40-KSRS08-90	40	8	90	14	20	40	10	3°
BT40-KSRS08-120	40	8	120	14	23	40	10	3°
BT40-KSRS08-160	40	8	160	14	27	40	10	3°
BT40-KSRS10-90	40	10	90	16	22	46	10	3°
BT40-KSRS10-120	40	10	120	16	25	46	10	3°
BT40-KSRS10-160	40	10	160	16	29	46	10	3°
BT40-KSRS12-90	40	12	90	18	24	50	10	3°
BT40-KSRS12-120	40	12	120	18	27	50	10	3°
BT40-KSRS12-160	40	12	160	18	31	50	10	3°

BT-KSR

Mandrini a calettamento a caldo slim 4,5°
Cono MAS-BT40



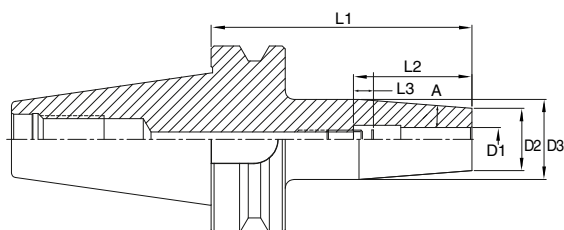
JIS
B6339
MAS 403 BT

TIPO
A

↗ = 0,003

G2.5
20.000
min⁻¹

Codice	BT	D1	L1	D2	D3	L2	L3	A
BT30-KSR04-60	30	4	60	15	20	-	-	4,5°
BT30-KSR06-80	30	6	80	21	27	-	-	4,5°
BT30-KSR08-80	30	8	80	21	27	40	10	4,5°
BT30-KSR10-80	30	10	80	24	32	46	10	4,5°
BT30-KSR12-80	30	12	80	24	32	50	10	4,5°
BT30-KSR16-80	30	16	80	27	34	52	10	4,5°
BT40-KSR04-90	40	4	90	15	20	-	-	4,5°
BT40-KSR06-90	40	6	90	21	27	-	-	4,5°
BT40-KSR06-120	40	6	120	21	27	-	-	4,5°
BT40-KSR06-160	40	6	160	21	32	-	-	4,5°
BT40-KSR08-90	40	8	90	21	27	40	10	4,5°
BT40-KSR08-120	40	8	120	21	27	40	10	4,5°
BT40-KSR08-160	40	8	160	21	32	40	10	4,5°
BT40-KSR10-90	40	10	90	24	32	46	10	4,5°
BT40-KSR10-120	40	10	120	24	32	46	10	4,5°
BT40-KSR10-160	40	10	160	24	34	46	10	4,5°
BT40-KSR12-90	40	12	90	24	32	50	10	4,5°
BT40-KSR12-120	40	12	120	24	32	50	10	4,5°
BT40-KSR12-160	40	12	160	24	34	50	10	4,5°
BT40-KSR16-90	40	16	90	27	34	52	10	4,5°
BT40-KSR16-120	40	16	120	27	34	52	10	4,5°
BT40-KSR16-160	40	16	160	27	34	52	10	4,5°
BT40-KSR20-90	40	20	90	33	42	54	10	4,5°
BT40-KSR20-120	40	20	120	33	42	54	10	4,5°
BT40-KSR20-160	40	20	160	33	42	54	10	4,5°
BT40-KSR25-100	40	25	100	44	52,5	62	10	4,5°
BT40-KSR25-160	40	25	160	44	52,5	62	10	4,5°
BT40-KSR32-100	40	32	100	44	52,5	67	10	4,5°
BT40-KSR32-160	40	32	160	44	52,5	67	10	4,5°
BT50-KSR06-100	50	6	100	21	27	-	-	4,5°
BT50-KSR06-160	50	6	160	21	32	-	-	4,5°
BT50-KSR08-100	50	8	100	21	27	40	10	4,5°
BT50-KSR08-160	50	8	160	21	32	40	10	4,5°
BT50-KSR10-100	50	10	100	24	32	46	10	4,5°
BT50-KSR10-160	50	10	160	24	34	46	10	4,5°
BT50-KSR12-100	50	12	100	24	32	50	10	4,5°
BT50-KSR12-160	50	12	160	24	34	50	10	4,5°
BT50-KSR16-100	50	16	100	27	34	52	10	4,5°
BT50-KSR16-160	50	16	160	27	34	52	10	4,5°
BT50-KSR20-100	50	20	100	33	42	54	10	4,5°
BT50-KSR20-160	50	20	160	33	42	54	10	4,5°
BT50-KSR25-100	50	25	100	44	52,5	62	10	4,5°
BT50-KSR25-160	50	25	160	44	52,5	62	10	4,5°
BT50-KSR32-100	50	32	100	44	52,5	67	10	4,5°
BT50-KSR32-160	50	32	160	44	52,5	67	10	4,5°

BBT-KSRS
Mandrini a calettamento a caldo slim 3°
 con cono a doppia faccia di contatto

 MAS 403 BT
 «B»
 DOPIO
 CONTATTO

 TIPO
 A

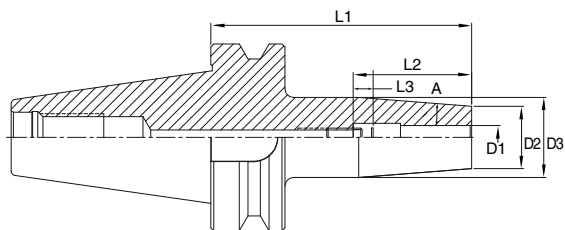
 $\nabla = 0,003$

 G2.5
 20.000
 min⁻¹

Codice	BBT	D1	L1	D2	D3	L2	L3	A
BBT30-KSRS03-60	30	3	60	8	11	-	-	3°
BBT30-KSRS04-60	30	4	60	10	13	-	-	3°
BBT30-KSRS06-80	30	6	80	12	17	-	-	3°
BBT30-KSRS08-80	30	8	80	14	19	40	10	3°
BBT30-KSRS10-80	30	10	80	16	21	46	10	3°
BBT30-KSRS12-80	30	12	80	18	23	50	10	3°
BBT40-KSRS04-90	40	4	90	15	20	-	-	3°
BBT40-KSRS04-120	40	6	90	21	27	-	-	3°
BBT40-KSRS04-160	40	6	120	21	27	-	-	3°
BBT40-KSRS06-90	40	6	160	21	32	-	-	3°
BBT40-KSRS06-120	40	8	90	21	27	40	10	3°
BBT40-KSRS06-160	40	8	120	21	27	40	10	3°
BBT40-KSRS08-90	40	8	160	21	32	40	10	3°
BBT40-KSRS08-120	40	10	90	24	32	46	10	3°
BBT40-KSRS08-160	40	10	120	24	32	46	10	3°
BBT40-KSRS10-90	40	10	160	24	34	46	10	3°
BBT40-KSRS10-120	40	12	90	24	32	50	10	3°
BBT40-KSRS10-160	40	12	120	24	32	50	10	3°
BBT40-KSRS12-90	40	12	160	24	34	50	10	3°
BBT40-KSRS12-120	40	16	90	27	34	52	10	3°
BBT40-KSRS12-160	40	16	120	27	34	52	10	3°

BBT-KSR

Mandrini a calettamento a caldo slim 4,5° con cono a doppia faccia di contatto



MAS 403 BT
«B»
DOPPIO
CONTATTO

TIPO
A

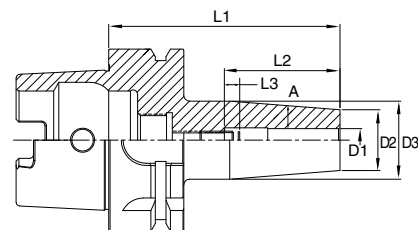
↗ = 0,003
↓ ↘

G2.5
20.000
min⁻¹

Codice	BBT	D1	L1	D2	D3	L2	L3	A
BBT30-KSR04-60	30	4	60	15	20	-	-	4,5°
BBT30-KSR06-80	30	6	80	21	27	-	-	4,5°
BBT30-KSR08-80	30	8	80	21	27	40	10	4,5°
BBT30-KSR10-80	30	10	80	24	32	46	10	4,5°
BBT30-KSR12-80	30	12	80	24	32	50	10	4,5°
BBT30-KSR16-80	30	16	80	27	34	52	10	4,5°
BBT40-KSR04-90	40	4	90	15	20	-	-	4,5°
BBT40-KSR06-90	40	6	90	21	27	-	-	4,5°
BBT40-KSR06-120	40	6	120	21	27	-	-	4,5°
BBT40-KSR06-160	40	6	160	21	32	-	-	4,5°
BBT40-KSR08-90	40	8	90	21	27	40	10	4,5°
BBT40-KSR08-120	40	8	120	21	27	40	10	4,5°
BBT40-KSR08-160	40	8	160	21	32	40	10	4,5°
BBT40-KSR10-90	40	10	90	24	32	46	10	4,5°
BBT40-KSR10-120	40	10	120	24	32	46	10	4,5°
BBT40-KSR10-160	40	10	160	24	34	46	10	4,5°
BBT40-KSR12-90	40	12	90	24	32	50	10	4,5°
BBT40-KSR12-120	40	12	120	24	32	50	10	4,5°
BBT40-KSR12-160	40	12	160	24	34	50	10	4,5°
BBT40-KSR16-90	40	16	90	27	34	52	10	4,5°
BBT40-KSR16-120	40	16	120	27	34	52	10	4,5°
BBT40-KSR16-160	40	16	160	27	34	52	10	4,5°
BBT40-KSR20-90	40	20	90	33	42	54	10	4,5°
BBT40-KSR20-120	40	20	120	33	42	54	10	4,5°
BBT40-KSR20-160	40	20	160	33	42	54	10	4,5°
BBT40-KSR25-100	40	25	100	44	52,5	62	10	4,5°
BBT40-KSR25-160	40	25	160	44	52,5	62	10	4,5°
BBT40-KSR32-100	40	32	100	44	52,5	67	10	4,5°
BBT40-KSR32-160	40	32	160	44	52,5	67	10	4,5°
BBT50-KSR06-100	50	6	100	21	27	-	-	4,5°
BBT50-KSR06-160	50	6	160	21	32	-	-	4,5°
BBT50-KSR08-100	50	8	100	21	27	40	10	4,5°
BBT50-KSR08-160	50	8	160	21	32	40	10	4,5°
BBT50-KSR10-100	50	10	100	24	32	46	10	4,5°
BBT50-KSR10-160	50	10	160	24	34	46	10	4,5°
BBT50-KSR12-100	50	12	100	24	32	50	10	4,5°
BBT50-KSR12-160	50	12	160	24	34	50	10	4,5°
BBT50-KSR16-100	50	16	100	27	34	52	10	4,5°
BBT50-KSR16-160	50	16	160	27	34	52	10	4,5°
BBT50-KSR20-100	50	20	100	33	42	54	10	4,5°
BBT50-KSR20-160	50	20	160	33	42	54	10	4,5°
BBT50-KSR25-100	50	25	100	44	52,5	62	10	4,5°
BBT50-KSR25-160	50	25	160	44	52,5	62	10	4,5°
BBT50-KSR32-100	50	32	100	44	52,5	67	10	4,5°
BBT50-KSR32-160	50	32	160	44	52,5	67	10	4,5°

HSK-KSRS

Mandrini a calettamento a caldo slim 3°
Cono HSK-A DIN 69893/A

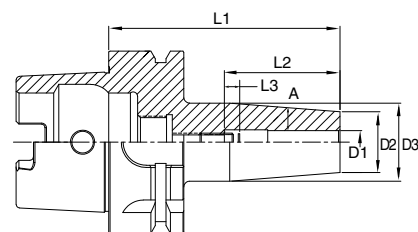


DIN 69893	TIPO E	$\nabla = 0,003$	G2.5 20.000 min ⁻¹
-----------	--------	------------------	-------------------------------------

Codice	HSK-A	D1	L1	D2	D3	L2	L3	A
HSK32A-KSRS04-60	32	4	60	10	14	-	-	3°
HSK32A-KSRS06-70	32	6	70	12	17	-	-	3°
HSK32A-KSRS08-70	32	8	70	14	19	40	10	3°
HSK32A-KSRS10-80	32	10	80	16	22	46	10	3°
HSK40A-KSRS04-60	40	4	60	10	14	-	-	3°
HSK40A-KSRS06-80	40	6	80	12	18	-	-	3°
HSK40A-KSRS08-80	40	8	80	14	20	40	10	3°
HSK40A-KSRS10-80	40	10	80	16	22	46	10	3°
HSK40A-KSRS12-60	40	12	60	18	22	50	10	3°
HSK40A-KSRS12-90	40	12	90	18	25	50	10	3°
HSK50A-KSRS04-60	50	4	60	10	13	-	-	3°
HSK50A-KSRS06-80	50	6	80	12	17	-	-	3°
HSK50A-KSRS08-80	50	8	80	14	29	40	10	3°
HSK50A-KSRS10-85	50	10	85	16	22	46	10	3°
HSK50A-KSRS12-90	50	12	90	18	24	50	10	3°
HSK63A-KSRS04-80	63	4	80	10	15	-	-	3°
HSK63A-KSRS04-120	63	4	120	10	19	-	-	3°
HSK63A-KSRS04-160	63	4	160	10	24	-	-	3°
HSK63A-KSRS06-80	63	6	80	12	17	-	-	3°
HSK63A-KSRS06-120	63	6	120	12	21	-	-	3°
HSK63A-KSRS06-160	63	6	160	12	26	-	-	3°
HSK63A-KSRS08-80	63	8	80	14	19	40	10	3°
HSK63A-KSRS08-120	63	8	120	14	23	40	10	3°
HSK63A-KSRS08-160	63	8	160	14	28	40	10	3°
HSK63A-KSRS10-85	63	10	85	16	22	46	10	3°
HSK63A-KSRS10-120	63	10	120	16	25	46	10	3°
HSK63A-KSRS10-160	63	10	160	16	30	46	10	3°
HSK63A-KSRS12-90	63	12	90	18	24	50	10	3°
HSK63A-KSRS12-120	63	12	120	18	27	50	10	3°
HSK63A-KSRS12-160	63	12	160	18	32	50	10	3°

HSK-KSR

Mandrini a calettamento a caldo slim 4,5°
Cono HSK-A DIN 69893/A



DIN 69893

TIPO A

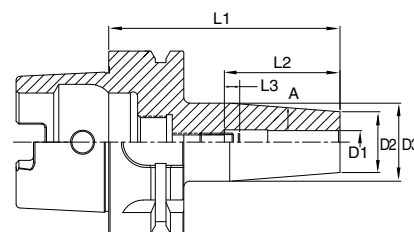


G2.5
20.000
min⁻¹

Codice	HSK-A	D1	L1	D2	D3	L2	L3	A
HSK32A-KSR04-60	32	4	60	15	20	-	-	4,5°
HSK32A-KSR06-70	32	6	70	21	27	-	-	4,5°
HSK32A-KSR08-70	32	8	70	21	27	40	10	4,5°
HSK32A-KSR10-80	32	10	80	24	32	46	10	4,5°
HSK40A-KSR04-60	40	4	60	15	20	-	-	4,5°
HSK40A-KSR06-60	40	6	60	21	27	-	-	4,5°
HSK40A-KSR06-80	40	6	80	21	27	-	-	4,5°
HSK40A-KSR08-60	40	8	60	21	27	40	10	4,5°
HSK40A-KSR08-80	40	8	80	21	27	40	10	4,5°
HSK40A-KSR10-60	40	10	60	24	32	46	10	4,5°
HSK40A-KSR10-90	40	10	80	24	32	46	10	4,5°
HSK40A-KSR12-60	40	12	60	24	32	50	10	4,5°
HSK40A-KSR12-90	40	12	90	24	32	50	10	4,5°
HSK50A-KSR04-60	50	4	60	15	20	-	-	4,5°
HSK50A-KSR06-80	50	6	80	21	27	-	-	4,5°
HSK50A-KSR08-80	50	8	80	21	27	40	10	4,5°
HSK50A-KSR10-85	50	10	85	24	32	46	10	4,5°
HSK50A-KSR12-90	50	12	90	24	32	50	10	4,5°
HSK50A-KSR16-95	50	16	95	27	34	52	10	4,5°
HSK63A-KSR04-80	63	4	80	15	20	-	-	4,5°
HSK63A-KSR06-80	63	6	80	21	27	-	-	4,5°
HSK63A-KSR06-120	63	6	120	21	27	-	-	4,5°
HSK63A-KSR06-160	63	6	160	21	32	-	-	4,5°
HSK63A-KSR08-80	63	8	80	21	27	40	10	4,5°
HSK63A-KSR08-120	63	8	120	21	27	40	10	4,5°
HSK63A-KSR08-160	63	8	160	21	32	40	10	4,5°
HSK63A-KSR10-85	63	10	85	24	32	46	10	4,5°
HSK63A-KSR10-120	63	10	120	24	32	46	10	4,5°
HSK63A-KSR10-160	63	10	160	24	34	46	10	4,5°
HSK63A-KSR12-90	63	12	90	24	32	50	10	4,5°

HSK-KSR

Mandrini a calettamento a caldo slim 4,5° Cono HSK-A DIN 69893/A



DIN

69893

TIPO

A

 $\nabla = 0,003$

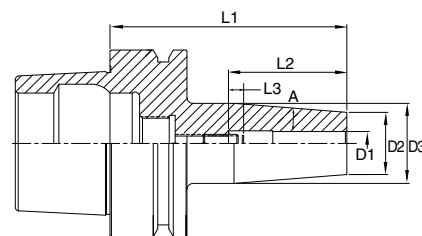
 G2.5
20.000
min⁻¹

Codice	HSK-A	D1	L1	D2	D3	L2	L3	A
HSK63A-KSR12-120	63	12	120	24	32	50	10	4,5°
HSK63A-KSR12-160	63	12	160	24	34	50	10	4,5°
HSK63A-KSR16-95	63	16	95	27	34	52	10	4,5°
HSK63A-KSR16-120	63	16	120	27	34	52	10	4,5°
HSK63A-KSR16-160	63	16	160	27	34	52	10	4,5°
HSK63A-KSR20-100	63	20	100	33	42	54	10	4,5°
HSK63A-KSR20-120	63	20	120	33	42	54	10	4,5°
HSK63A-KSR20-160	63	20	160	33	42	54	10	4,5°
HSK63A-KSR25-115	63	25	115	44	52,5	62	10	4,5°
HSK63A-KSR25-160	63	25	160	44	52,5	62	10	4,5°
HSK63A-KSR32-120	63	32	120	44	52,5	67	10	4,5°
HSK63A-KSR32-160	63	32	160	44	52,5	67	10	4,5°
HSK100A-KSR06-85	100	6	85	21	27	-	-	4,5°
HSK100A-KSR06-120	100	6	120	21	27	-	-	4,5°
HSK100A-KSR06-160	100	6	160	21	32	-	-	4,5°
HSK100A-KSR08-85	100	8	85	21	27	40	10	4,5°
HSK100A-KSR08-120	100	8	120	21	27	40	10	4,5°
HSK100A-KSR08-160	100	8	160	21	32	40	10	4,5°
HSK100A-KSR10-90	100	10	90	24	32	46	10	4,5°
HSK100A-KSR10-120	100	10	120	24	32	46	10	4,5°
HSK100A-KSR10-160	100	10	160	24	34	46	10	4,5°
HSK100A-KSR12-95	100	12	95	24	32	50	10	4,5°
HSK100A-KSR12-120	100	12	120	24	32	50	10	4,5°
HSK100A-KSR12-160	100	12	160	24	34	50	10	4,5°
HSK100A-KSR16-100	100	16	100	27	34	52	10	4,5°
HSK100A-KSR16-160	100	16	160	27	34	52	10	4,5°
HSK100A-KSR20-105	100	20	105	33	42	54	10	4,5°
HSK100A-KSR20-160	100	20	160	33	42	54	10	4,5°
HSK100A-KSR25-115	100	25	115	44	52,5	62	10	4,5°
HSK100A-KSR25-160	100	25	160	44	52,5	62	10	4,5°
HSK100A-KSR32-120	100	32	120	44	52,5	67	10	4,5°
HSK100A-KSR32-160	100	32	160	44	52,5	67	10	4,5°

HSK-KSRS

Mandrini a calettamento a caldo slim 3°

Cono HSK-E DIN 69893/E



DIN 69893

TIPO E

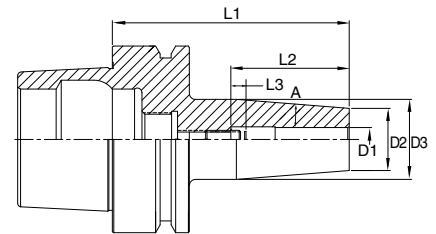
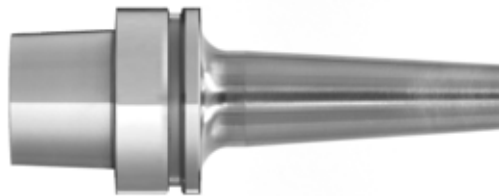
↗ = 0,003

G2.5
20.000
min⁻¹

Codice	HSK-E	D1	L1	D2	D3	L2	L3	A
HSK32E-KSRS04-60	32	4	60	10	14	-	-	3°
HSK32E-KSRS06-70	32	6	70	12	17	-	-	3°
HSK32E-KSRS08-70	32	8	70	14	19	40	10	3°
HSK32E-KSRS10-80	32	10	80	16	22	46	10	3°
HSK40E-KSRS04-60	40	4	60	10	14	-	-	3°
HSK40E-KSRS06-60	40	6	60	12	16	-	-	3°
HSK40E-KSRS06-80	40	6	80	12	18	-	-	3°
HSK40E-KSRS08-60	40	8	60	14	18	40	10	3°
HSK40E-KSRS08-80	40	8	80	14	20	40	10	3°
HSK40E-KSRS10-60	40	10	60	16	20	46	10	3°
HSK40E-KSRS10-90	40	10	90	16	23	46	10	3°
HSK40E-KSRS12-60	40	12	60	18	22	50	10	3°
HSK40E-KSRS12-90	40	12	90	18	25	50	10	3°
HSK50E-KSRS04-60	50	4	60	10	13	-	-	3°
HSK50E-KSRS06-80	50	6	80	12	17	-	-	3°
HSK50E-KSRS08-80	50	8	80	14	29	40	10	3°
HSK50E-KSRS10-85	50	10	85	16	22	46	10	3°
HSK50E-KSRS12-90	50	12	90	18	24	50	10	3°

HSK-KSR

Mandrini a calettamento a caldo slim 4,5°
Cono HSK-E DIN 69893/E



DIN
69893

TIPO
E



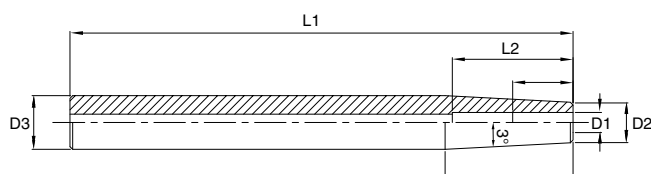
G2.5
20.000
min⁻¹

Codice	HSK-E	D1	L1	D2	D3	L2	L3	A
HSK32E-KSR04-60	32	4	60	15	20	-	-	4,5°
HSK32E-KSR06- 70	32	4	60	15	20	-	-	4,5°
HSK32E-KSR08- 70	32	4	60	15	20	-	-	4,5°
HSK32E-KSR10-80	32	4	60	15	20	-	-	4,5°
HSK40E-KSR04-60	40	4	60	15	20	-	-	4,5°
HSK40E-KSR06-60	40	6	60	21	27	-	-	4,5°
HSK40E-KSR06-80	40	6	80	21	27	-	-	4,5°
HSK40E-KSR08-60	40	8	60	21	27	40	10	4,5°
HSK40E-KSR08-80	40	8	80	21	27	40	10	4,5°
HSK40E-KSR10-60	40	10	60	24	32	46	10	4,5°
HSK40E-KSR10-90	40	10	80	24	32	46	10	4,5°
HSK40E-KSR12-60	40	12	60	24	32	50	10	4,5°
HSK40E-KSR12-90	40	12	90	24	32	50	10	4,5°
HSK50E-KSR04-60	50	4	60	15	20	-	-	4,5°
HSK50E-KSR06-80	50	6	80	21	27	-	-	4,5°
HSK50E-KSR08-80	50	8	80	21	27	40	10	4,5°
HSK50E-KSR10-85	50	10	85	24	32	46	10	4,5°
HSK50E-KSR12-90	50	12	90	24	32	50	10	4,5°
HSK50E-KSR16-95	50	16	95	27	34	52	10	4,5°

ST-KSRS

Mandrini a calettamento a caldo slim 3°

Gambo cilindrico


 DIN
1835

 TIPO
A

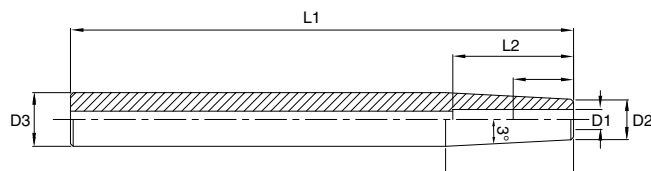
 G2.5
20.000
min⁻¹

Codice	D1	L1	D2		D3	L2	L3	L4
ST12-KSRS04-110	4	110	10		12	19	12	-
ST12-KSRS04-150	4	150	10		12	19	12	-
ST16-KSRS04-110	4	110	10		16	57	12	-
ST16-KSRS04-150	4	150	10		16	57	12	-
ST16-KSRS06-110	6	110	12		16	38	18	-
ST16-KSRS06-150	6	150	12		16	38	18	-
ST16-KSRS08-110	8	110	14		16	19	24	-
ST16-KSRS08-150	8	150	14		16	19	24	-
ST20-KSRS08-110	8	110	14		20	57	24	-
ST20-KSRS08-150	8	150	14		20	57	24	-
ST20-KSRS10-110	10	110	16		20	38	30	-
ST20-KSRS10-150	10	150	16		20	38	30	-
ST20-KSRS12-110	12	110	18		20	19	32	50
ST20-KSRS12-150	12	150	18		20	19	32	50
ST25-KSRS12-110	12	110	18		25	67	32	-
ST25-KSRS12-150	12	150	18		25	67	32	-

SW-KSRS

Mandrini a calettamento a caldo slim 3°

Gambo cilindrico in metallo duro



DIN 1835	TIPO A	$\pm 0,003$	G2.5 20.000 min ⁻¹
----------	--------	-------------	-------------------------------------

Codice	D1	L1	D2	D3	L2	L3	L4
SW12-KSRS04-150	4	150	10	12	19	12	35
SW12-KSRS04-200	4	200	10	12	19	12	35
SW12-KSRS04-250	4	250	10	12	19	12	35
SW16-KSRS04-150	4	150	10	16	57	12	35
SW16-KSRS04-200	4	200	10	16	57	12	35
SW16-KSRS04-250	4	250	10	16	57	12	35
SW16-KSRS04-300	4	300	10	16	57	12	35
SW16-KSRS06-150	6	150	12	16	38	18	35
SW16-KSRS06-200	6	200	12	16	38	18	35
SW16-KSRS06-250	6	250	12	16	38	18	35
SW16-KSRS06-300	6	300	12	16	38	18	35
SW16-KSRS08-150	8	150	14	16	19	24	40
SW16-KSRS08-200	8	200	14	16	19	24	40
SW16-KSRS08-250	8	250	14	16	19	24	40
SW16-KSRS08-300	8	300	14	16	19	24	40
SW20-KSRS08-150	8	150	14	20	57	24	45
SW20-KSRS08-200	8	200	14	20	57	24	45
SW20-KSRS08-250	8	250	14	20	57	24	45
SW20-KSRS08-300	8	300	14	20	57	24	45
SW20-KSRS10-150	10	150	16	20	38	30	45
SW20-KSRS10-200	10	200	16	20	38	30	45
SW20-KSRS10-250	10	250	16	20	38	30	45
SW20-KSRS10-300	10	300	16	20	38	30	45
SW20-KSRS12-150	12	150	18	20	19	32	50
SW20-KSRS12-200	12	200	18	20	19	32	50
SW20-KSRS12-250	12	250	18	20	19	32	50
SW20-KSRS12-300	12	300	18	20	19	32	50
SW25-KSRS12-150	12	150	18	25	67	32	54
SW25-KSRS12-200	12	200	18	25	67	32	54
SW25-KSRS12-250	12	200	18	25	67	32	54
SW25-KSRS12-300	12	300	18	25	67	32	54



Contatti
0731 879461 - 870551
Email
info@mprutensili.it

Trovi tutti i riferimenti
commerciali su
www.mprutensili.it
nella sezione
Home Page>La Squadra
o nella sezione
Cosa offriamo>Vendita

